

**School of Electrical and Electronics Engineering,
Presents
Post Webinar Report on
“Application of AI in Power System Engineering”
13.01.2023**

Greetings of the day!

We are happy to announce that, **School of Electrical and Electronics Engineering, organized a Webinar on “Application of AI in Power System Engineering” on 11.01.2023.** Dr. Sanhita Mishra, Associate Professor, SoEEE, KIIT University, was the invited and resource person for the event. The Scope of the webinar involved participants from school of EEE.

About the Event:

Application of AI in Power System Engineering:

In this Dr. Mishra introduce the power system, basic fundamentals of power system network, issues occur due to various fault conditions. Then, she starts with basics definition of Artificial Intelligence and how can we create intelligence system that can stimulate the human intelligence. She also explains about the important role of Biological Neuron in human intelligence and classifications of AI. She describes the comparison of AI Vs ML Vs DL. She listed out the various application of AI. With help of an experimental Analysis of expert system in AI CNN-SVM method she concluded the session.

Mrs. Sujo Oommen, Assistant Professor, School of EEE, initiated the webinar by welcoming the Guest. She narrated the contribution and current research of Dr. Mishra in the national building. She also delivered the vote of thanks and thanked the Guest and all the participants of this Webinar. A total of **56 students from 1st Year** were participated in the program.

Objectives:

- To provide the basic fundamentals of Power system network & Artificial Intelligence (AI).
- To discuss the issues in Power System Network.
- To describe the comparison of AI Vs ML Vs DL.

School of Electrical and Electronics Engineering, REVA University

Outcomes:

- To understand the fundamental and issues occur in Power System Network.
- Analyze different method of AI used in Power System Network.
- To inculcate the various method of machine learning or deep learning to train the power system network to address the issues.

Few Pictures from Webinar

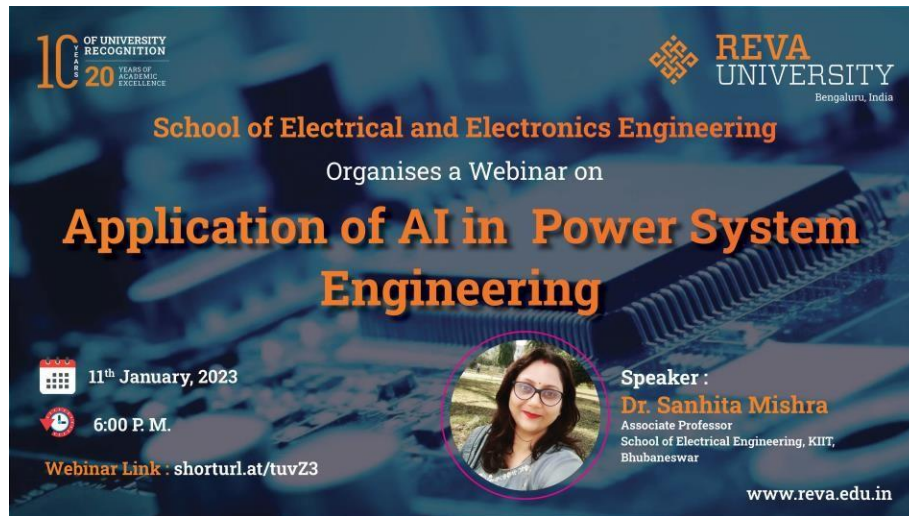


Fig.1 Brochure

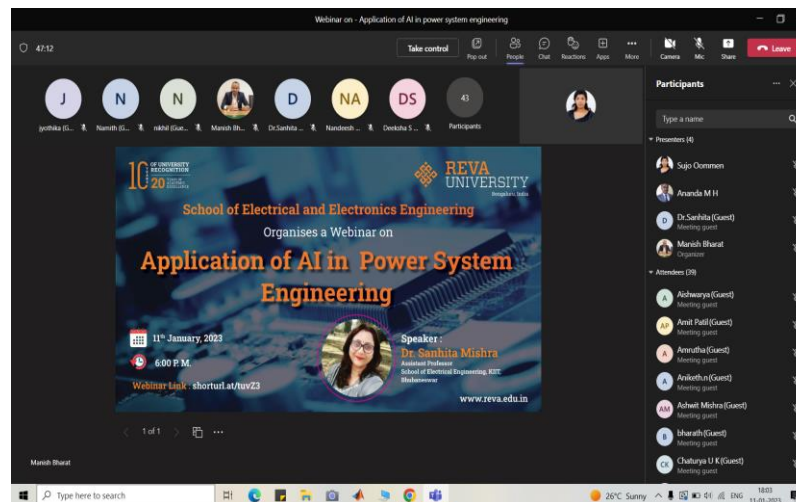


Fig. 2 Introducing the Guest Speaker

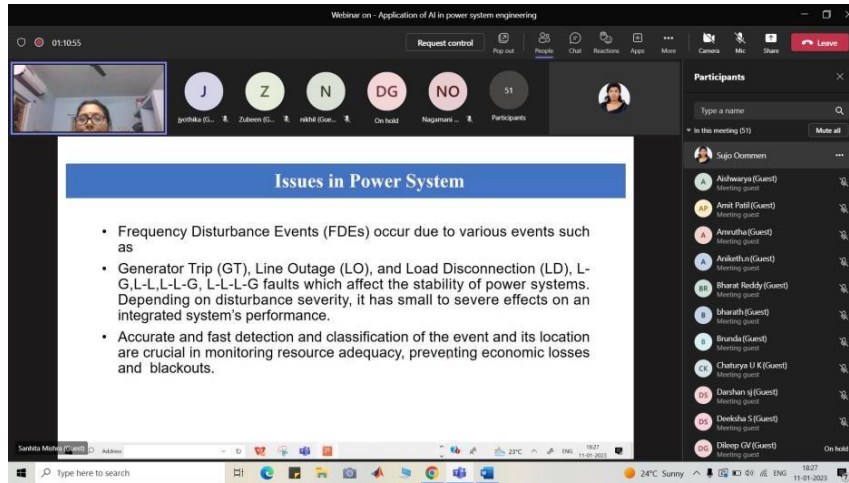


Fig.3 Issues in Power System

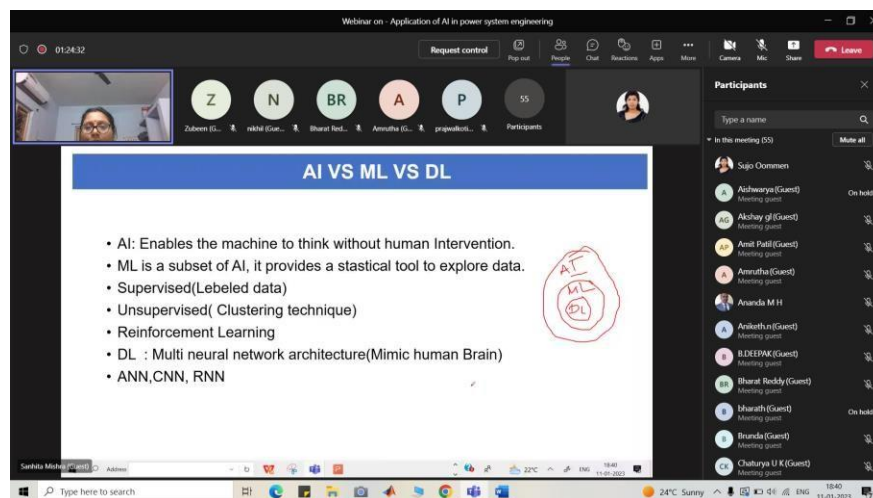


Fig. 4 Comparison of AI Vs ML Vs DL

Co-coordinators

Dr. Ritesh Dash, Associate Professor, SoEEE

Mrs. Sujo Oommen, Assistant Professor, School of EEE

Director